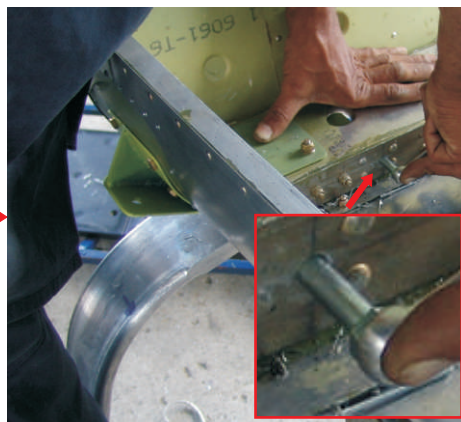




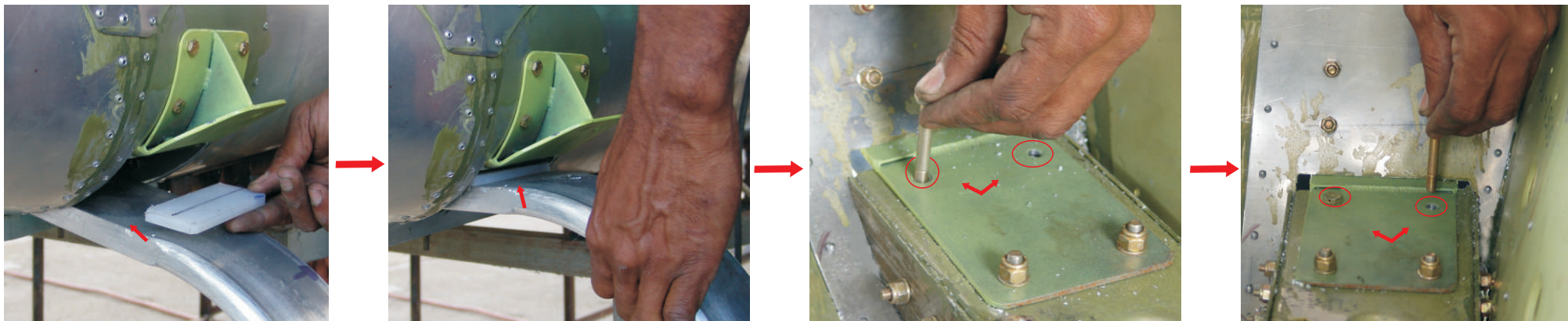
The seat slips forward, before remove the screws AN3-11A with its respective Nuts and Washers of 3/16" that are in the rear part of the seat.

Once retired the back screws, the seat is removed slipping it for the rails and then take off the front screws to remove the rails. For then install the Main Gear, working through the openings of inspection in the floor.



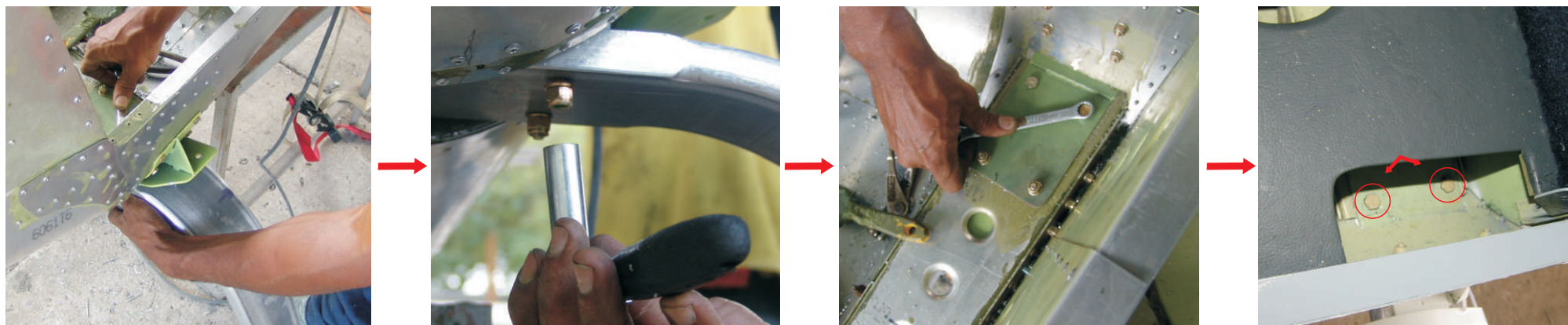
The Main Gear is introduced through the main channel in the fuselage, under the steel plate that fix the strut of the wing. Then the bolt AN6-47A is introduced in the channel for fix the Main Gear, this bolt must cross the channel and the Main Gear inside, for then fix the srew with its respective nut and washer.

Once the bolt has crossed the channel and the Main Gear, is necessary adjust it from inside, with it respective nut and washer of 3/8" This operation can be do it through the inspection window in the bottom of the fuselage.



Once positioned the Main Gear, and insured in the fuselage, proceed to install the plastic piece (in teflon) between the Main Gear and the main channel in the fuselage.

Holding the Main Gear, two bolts AN4-16A are introduced, for fix the plastic piece; through the openings of inspection in the floor, where were the seats, be sure that the screws, crosses the channel, the plastic piece and the Main Gear.



Introduced the 2 bolts AN4-16, fix each one with its respective nut and washer of 1/4.”

Once finished the work, proceed to carry out the same procedure for the other side of the airplane with the Main Gear left.

Finalized the procedure of assemble the main gear of both sides; proceed, to carry out the assemble of the seats, placing the rails that were removed and fixing the bolts that were removed initially.



Fixed the Main Gear with its Wheel and tested the brake system, the wheel pants of the Main Gear are installed.

The wheel pants, are install of up down leaving them on the plates of wheel pants, located in the Main Gear.



Positioned the wheel pants, the wheels pants are fixed with 2 screws R-8 in the front side and for the rear side with other 2 screws R-8.



This operation is carried out for both sides of the Main Gear.